

Kit Includes: One (1) or Two (2) LED Pods, Deutsch-style wire pigtail, mounting bracket, and hardware



Features

- Advanced TIR (total internal reflection) optics
- High intensity LED chips
- Back-lighting available in white, amber, red, and blue*
- Durable powdercoated aluminum construction
- Integrated Deutsch-style connector
- Pin fin heatsink design

**The yellow lens option is only available with an amber backlight*

Specifications

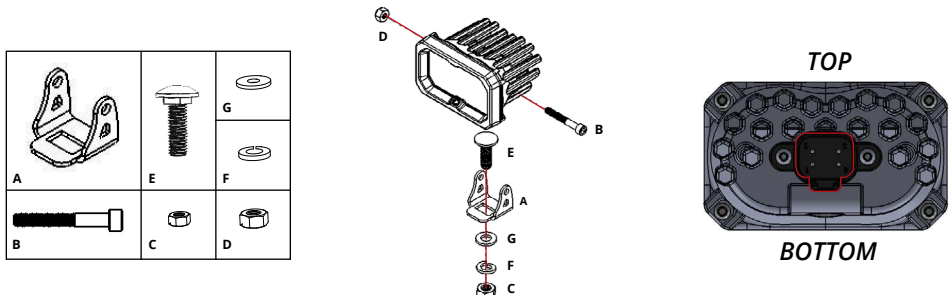
- Input Voltage: 9-16V
- Input Power: 7.7 watts (SSC2 Sport)
25.6 watts (SSC2 Pro)
- Current Draw: 0.6 amps @ 12.8V (SSC2 Sport)
2 amps @ 12.8V (SSC2 Pro)
- Operating Temperature: -40° to 185°F
- Weight: 1.1 lbs (single), 1.65 lbs (pair)

Wiring

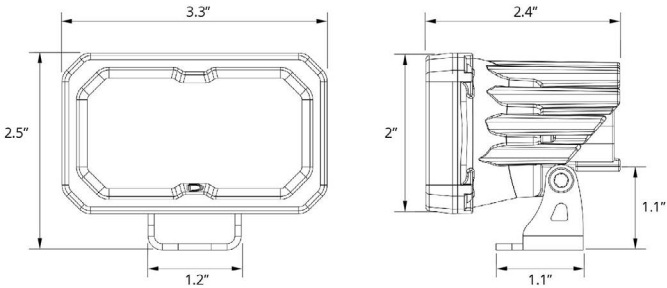
Connect the red wire to positive supply, and black wire to negative or common ground. Tap the blue wire for the backlight to your desired vehicle function. If you are using the pigtail, the yellow wire won't be used. **Please note:** This auxiliary lamp draws high current, and requires adequately-sized wiring for safe operation. If you are not using a Diode Dynamics wire harness, use wire sized 16 AWG or larger for main power and ground. Use wire sized 18 AWG or larger for the backlight (blue wire on the pigtail). Please be mindful of current ratings and wire size, especially if splitting power signals to multiple pods, or using switches. If you have any questions, please feel free to contact us for assistance.

Mounting

If you wish, you may use the included hardware to mount your pod. Fasteners are included. We recommend drilling a 3/8" hole to allow flush fitment of the bracket. The most common mounting style is shown below. Stage Series Pods are also compatible with most standard mounting brackets on the market.



Dimensions



Output

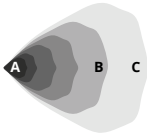
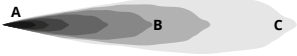
Driving



Fog/Wide

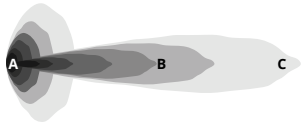


Flood



Spot

Combo



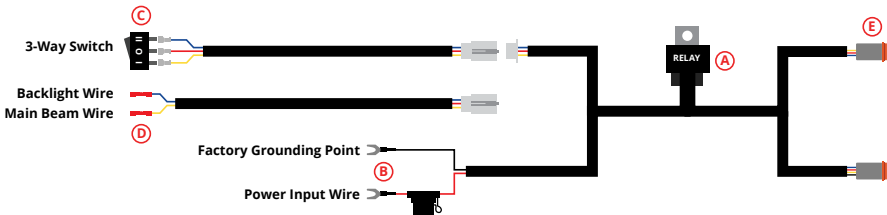
A - lux at 10 meters
B - Distance (m) with 1 lux
C - Distance (m) with .25 lux

SS ^{C2} SPORT						SS ^{C2} PRO				
Lens Color/Optics	cd*	A	B	C	SKU	cd*	A	B	C	SKU
		Illuminance (lx)	Distance (m)				Illuminance (lx)	Distance (m)		
White Combo	16,000	160	126	250	DD6387	27,000	270	164	330	DD6408
White Driving	37,500	375	194	390	DD6381	59,000	590	243	490	DD6402
White Flood	375	4	19	40	DD6392	700	7	26	50	DD6413
White Fog	5,000	50	71	140	DD6384	8,500	85	92	180	DD6405
White Spot	91,000	910	302	600	DD6397	97,000	970	311	620	DD6418
Yellow Combo	13,500	135	116	230	DD6391	24,000	240	155	310	DD6412
Yellow Driving	27,000	270	164	330	DD6383	46,000	460	214	430	DD6404
Yellow Flood	315	3	18	40	DD6396	650	7	25	50	DD6417
Yellow Fog	4,400	44	66	130	DD6386	7,500	75	87	170	DD6407
Yellow Spot	60,000	600	245	490	DD6401	84,000	840	290	580	DD6422
* PEAK BEAM INTENSITY						* PEAK BEAM INTENSITY				
Measured Output		Output Color				Measured Output		Output Color		
White	870 lumens	White	6000K	Cool White		White	1,990 lumens	White	6000K	Cool White
Yellow	780 lumens	Yellow	3000K	Selective Yellow		Yellow	1,860 lumens	Yellow	3000K	Selective Yellow

Heavy Duty 4-Pin Wiring Harness

Thank you for your purchase of this Diode Dynamics Wiring Harness. Using Deutsch style connectors, this harness is intended to be used with Stage Series LEDs with backlight functionality. **This harness should not be used on a 24V system.**

Basic installation instructions are included below. Please contact us if you have any questions.



1. Determine a suitable location to mount the relay, (A) near the battery or main power terminal.

2. Connect the red power input wire to the positive battery/power terminal. Connect the black ground wire to the negative battery terminal or a factory grounding point. (B)

3. **METHOD ONE - Add New Switch to Vehicle.** Determine a suitable location to mount the switch in the cabin of the vehicle. Route the switch wiring to that location. This may require going through the vehicle firewall. We recommend following the path of the factory wiring harness, and unplugging the switch while routing the wires. Drill a 3/4 inch hole and mount the switch. Reconnect wires to switch, with the red wire in the center position. (C)

METHOD TWO - Use OEM Upfitter/Auxiliary Switches. An extra wire pigtail is included with this harness, which should be used if you plan to control your lights with factory-installed "OEM" switches. At the white connector, unplug the switch wires from the harness, and connect the extra pigtail here instead. Using the butt connectors at the end of the pigtail, crimp the yellow wire and blue wire to OEM Auxiliary Switch wire leads. The yellow wire will activate the main LED power, and the blue wire will activate the backlight LED power. (D)

NOTE: The main LED power will be drawn from the battery, so any OEM Auxiliary Switch wires can be used, regardless of amperage rating.

4. Route the output wire(s) to each LED, avoiding any moving parts or direct contact with heat sources. Plug the output connector into the LED. (E)

5. Test thoroughly, and aim the LED appropriately based on use. Please check your local laws and regulations regarding aiming, installation, and restrictions for on-road use, as applicable.

This installation guide is for the following SKUs:

DD4093 Heavy Duty Dual Output 4-pin Wiring Harness
DD4104 Heavy Duty Single Output 4-pin Wiring Harness

DD4123 Ultra Heavy Duty Single Output 4-pin Wiring Harness
DD4124 Ultra Heavy Duty Dual Output 4-pin Wiring Harness