

# ROUGH COUNTRY

## SUSPENSION SYSTEMS®

### 2016 Tacoma 30" Single Row LED Bumper Mount

Thank you for choosing Rough Country for all your lighting needs.

#### ▲ NOTICE

Please read instructions before beginning installation. Check the kit hardware against the kit contents shown below. Be sure you have all needed parts and know where they go. If question exist, please call us @ 1-800-222-7023. We will be happy to answer any questions concerning the design, function, and correct use of our products.

#### ▲ NOTICE

Only fits **Toyota Tacoma 2016** models.

#### Tools Needed:

14mm Wrench  
 Reciprocating Saw  
 Side Cutters  
 10mm Socket  
 Flat Screwdriver



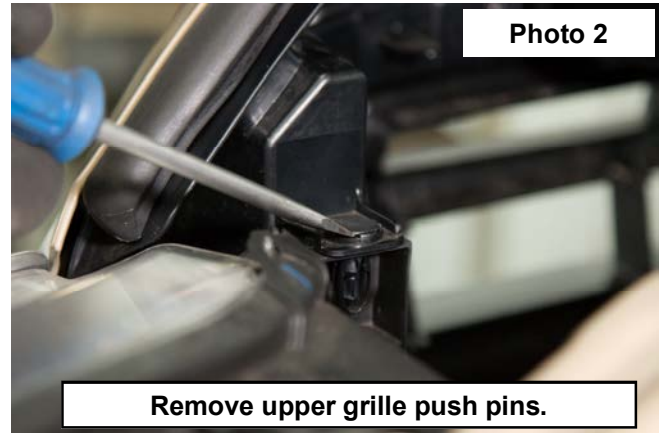
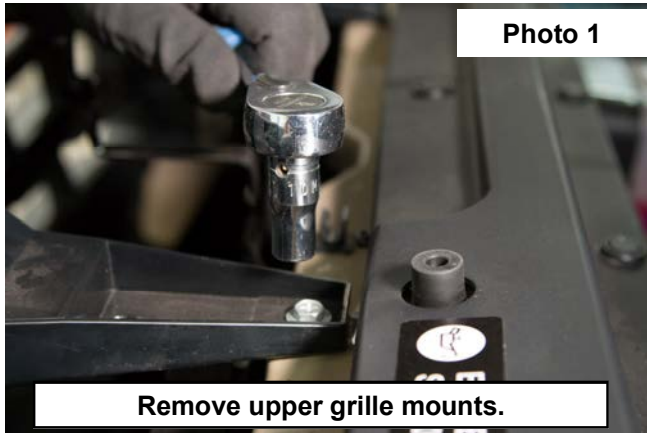
#### Kit Contents:

2-Rough Country LED Light Brackets  
 1-70619BAG containing:  
 Instructions  
 1-70523BAG2 containing:  
 (2) 8mm Hex Head Stainless Bolts

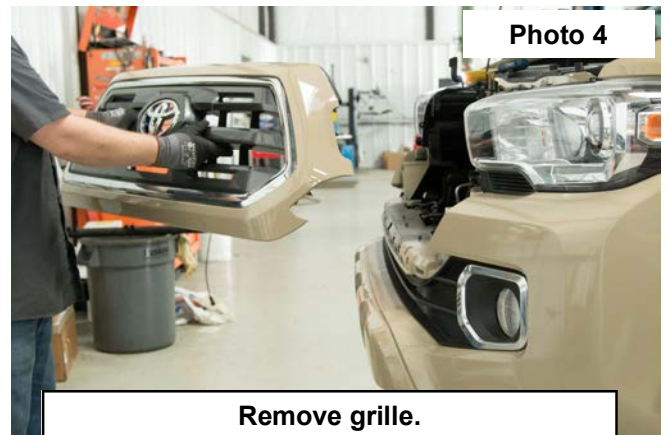
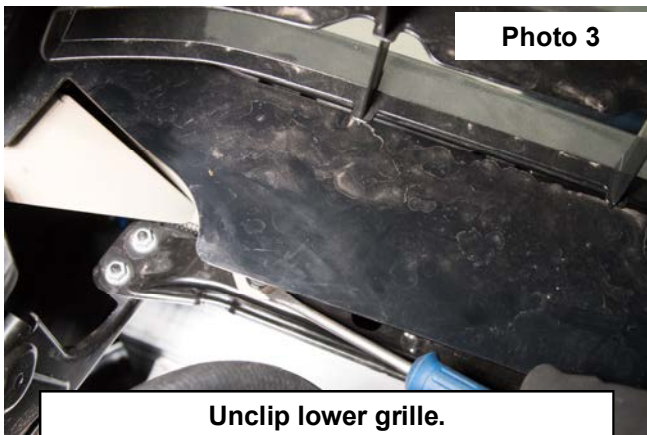
By purchasing any item sold by Rough Country, LLC, the buyer expressly warrants that he/she is in compliance with all applicable Federal, State, and Local laws and regulations regarding the purchase, ownership, and use of the item. It shall be the buyers responsibility to comply with all Federal, State and Local laws governing the sales of any items listed, illustrated or sold. The buyer expressly agrees to indemnify and hold harmless Rough Country, LLC for all claims resulting directly or indirectly from the purchase, ownership, or use of the items.



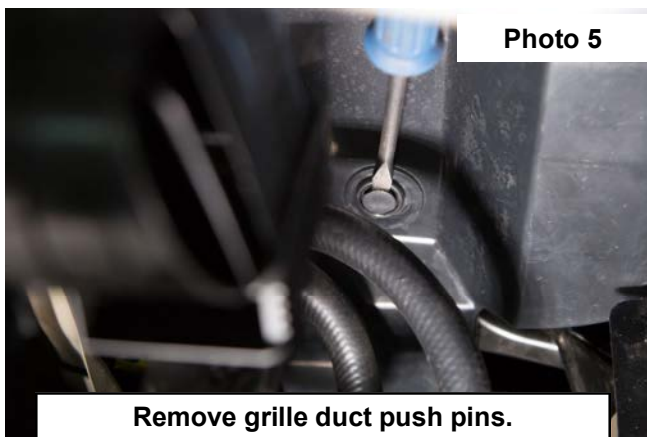
1. Park the vehicle on a smooth level surface.
2. Using a 10mm socket, remove the (2) upper grille mount screws. **See Photo 1.**
3. Using a flat screwdriver, remove the (2) upper grille push pins. **See Photo 2.**



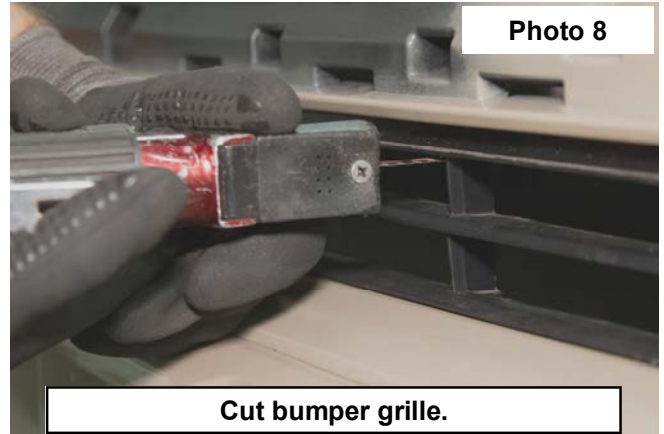
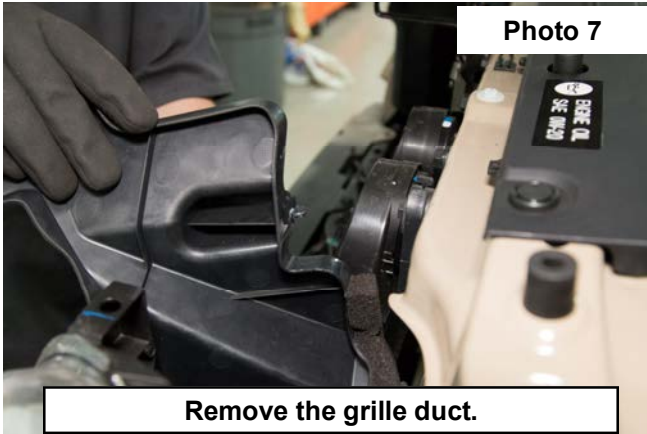
4. Reaching down behind the grille, use a flat screwdriver to release the lower clips holding the grille. **See Photo 3.**
5. Gently pull to remove the grille from the truck. **See Photo 4.**



6. Using a flat screwdriver, remove the (2) push pins holding the grille duct. **See Photo 5.**
7. Release the (2) clips from the radiator support that hold the grille duct. **See Photo 6.**



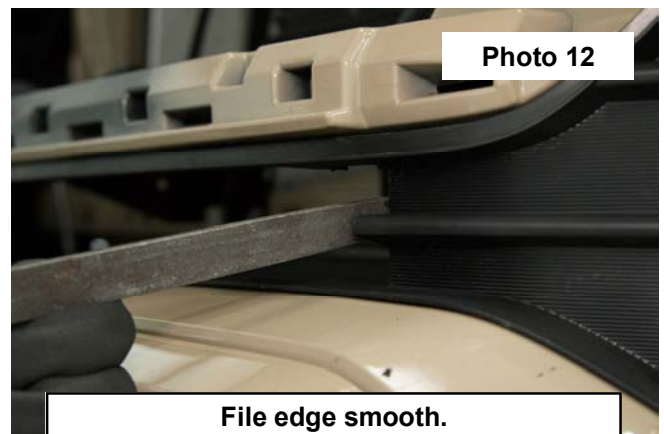
8. Gently pull to remove the grille duct from the truck. Repeat on opposite side of truck. **See Photo 7.**
9. Using a reciprocating saw, cut the vertical bars of the lower grille in the bumper and the horizontal bar on each end. **See Photo 8.**



10. Remove the grille from the bumper. **See Photo 9.**
11. Measure over 1.5+ and mark on the middle plastic part of the bumper. Do this on both sides of the bumper **See Photo 10.**

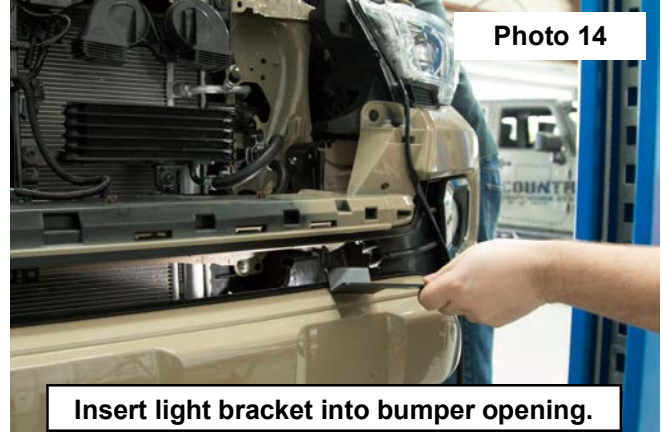
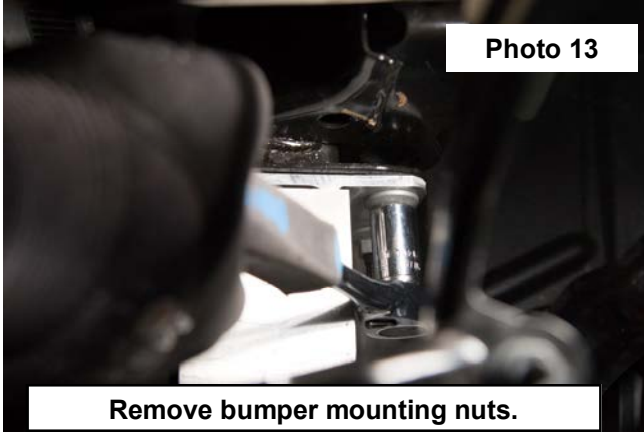


13. Using a reciprocating saw, remove the plastic to the mark and file the edge smooth. Do this on both sides of the bumper. **See Photos 11 & 12.**

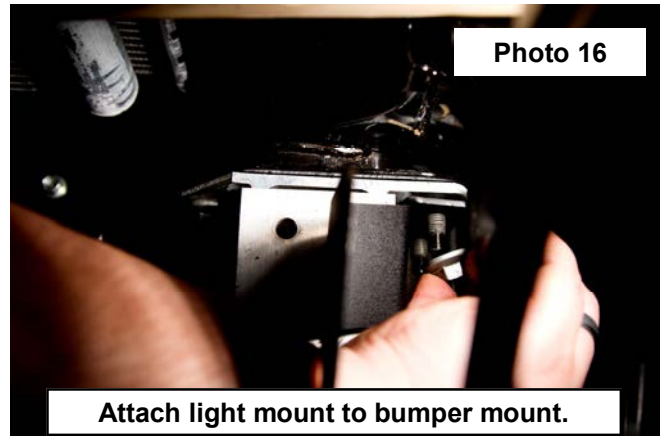
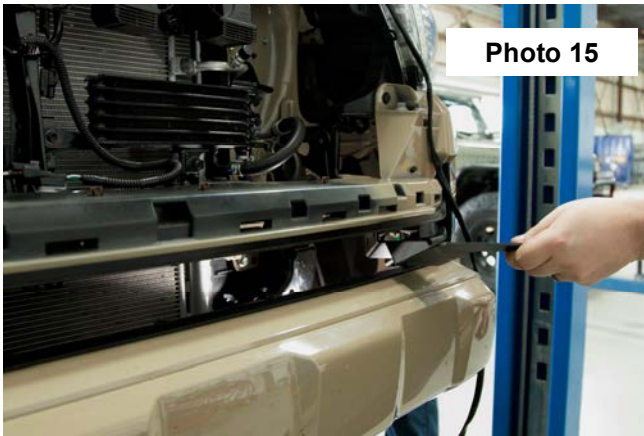




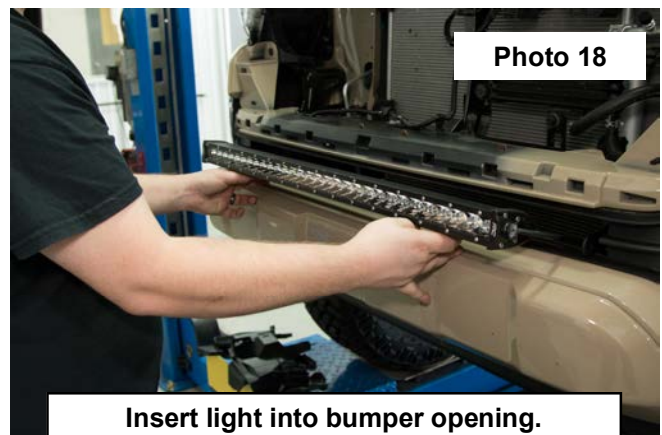
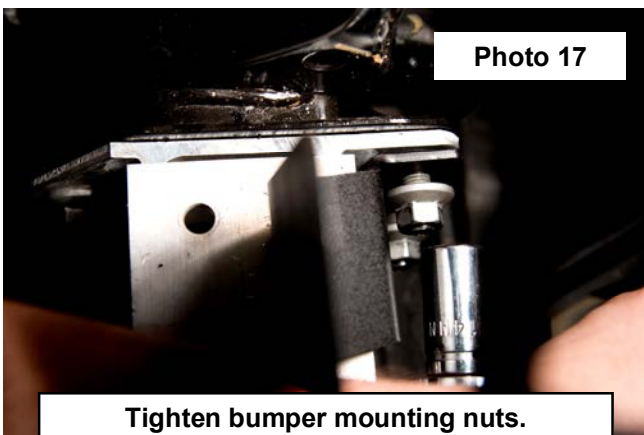
14. Using a 14mm socket, remove the (2) bumper mounting bolts on each side of the truck . **See Photo 13.**  
15. Insert light mounting brackets through hole in bumper. **See Photos 14 & 15.**



16. Using factory hardware, install the light mounting brackets on both sides of the truck. **See Photo 16.**



17. Using a 14mm socket tighten the factory nuts to factory torque specifications. **See Photo 17.**  
18. Insert light into opening in bumper. **See Photo 18.**



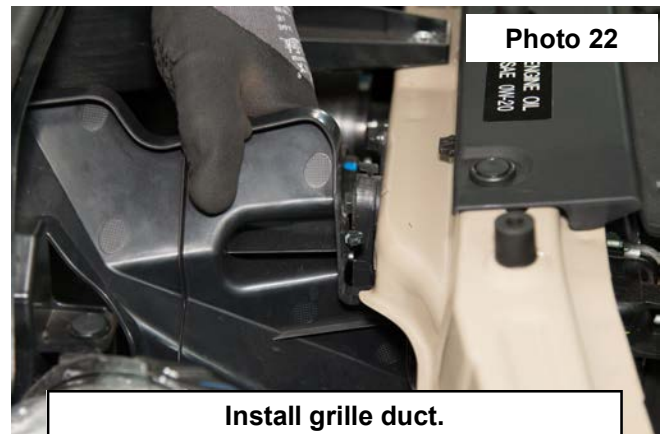
19. Using supplied 8mm bolts and spacers (supplied with the light), install the light between the light mounts. **See Photo 19.**

20. Measure 6+ from the bottom of the grille duct and mark. **See Photo 20.**



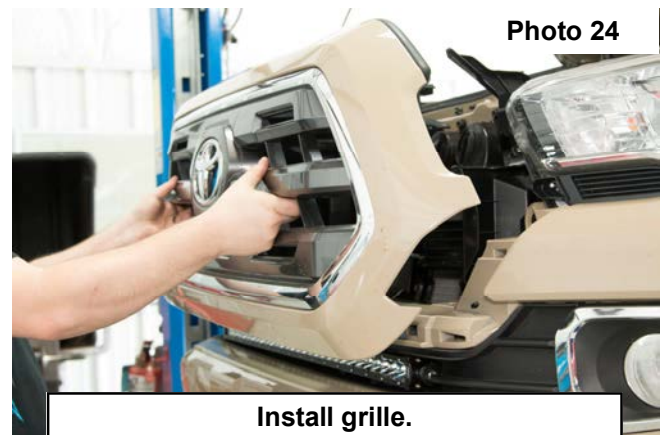
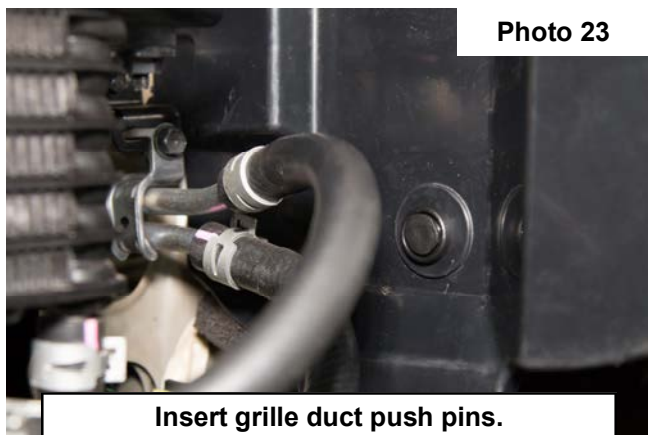
21. Using a reciprocating saw, cut the marked portion off of the grille duct. Repeat process for opposite side. **See Photo 21.**

22. Install the grille duct parts back onto the truck. **See Photo 22.**



23. Install grille duct push pins. **See Photo 23.**

24. Install the grille back on the truck by gently pushing into place. **See Photo 24.**





25. Install grille push pins. **See Photo 25.**

26. Using a 10mm socket and factory bolts, attach the upper grille mounts to the truck. **See Photo 26.**



27. Make sure the lower portion of the grille is locked into place with the factory clips.. **See Photo 27.**

28. Wire light per instructions included with light.

